

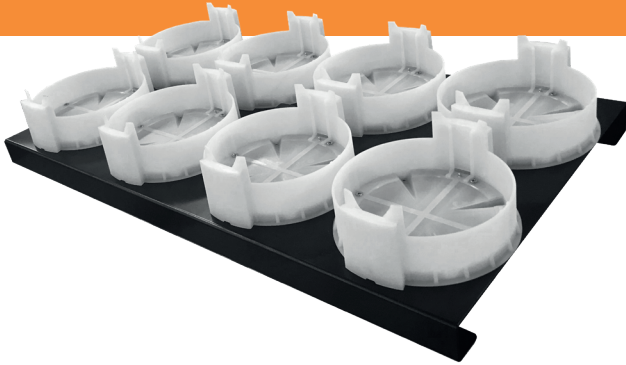


# DATASHEET

## Charging Plate for 8 x AX5

Compatible with:  
AX5 TriplePar

Date: 01/28/21 Version: 1.0



Connect to AC power and place AX5 units into the 8 charging disks to charge them.



## SPECIFICATIONS

Order Code	AX5-CHRPLT-8
Input Voltage	100~240VAC; 4.4A@115VAC; 3A@230VAC
Output	8 x 25.5VDC, 2.5A
Sockets Power IN/OUT	Powercon True1
Dimensions (mm/inch)	686 x 400 x 116 / 27 x 15.8 x 4.6
Weight (kg/lbs)	8 / 17.6
Connectors/Cables	1x Powercon True1 cable
Material	Aluminium, Nylon rings

## DRAWINGS

